



Emergency Water Assistance

for drought and contaminated water supplies

U.S. ARMY CORPS OF ENGINEERS

BUILDING STRONG®



Policy

The U.S. Army Corps of Engineers (Corps) is authorized under Public Law (PL) 84-99 to transport emergency supplies of clean drinking water for human consumption to any non-federal jurisdiction designated as a drought distressed or contaminated area, and to construct wells in such distressed areas. Assistance will only be to meet minimum public health and welfare requirements by providing an emergency supply of clean drinking water for human consumption. Water is provided only for human consumption, not for

livestock. The water is normally provided by tank trucks or small diameter pipelines from existing sources.

Eligibility for assistance

Any non-federal jurisdiction faced with a threat to public health and welfare from a drought or contaminated water situation affecting the water system may apply.

- The threat may be one of the following:
 - The maximum contaminant level or treatment technique (EPA rule under Safe Drinking Act) is exceeded.
 - The water supply has been identified as a source of illness by public health official.
 - An emergency (e.g. flood, chemical spill) occurred that resulted in contaminant(s) entering source of a sufficient scale to endanger health.
 - The equipment necessary to remove contaminants has been made inoperable.
 - The presence of contaminant(s) is indicated by other available information.
- The impacted area must have been declared a "drought distressed area" by the Governor and/or Tribal Chairman and Assistant Secretary of the Army for Civil Works.
- Corps assistance is supplemental to Tribal, State and local efforts. State, Tribal, and local agencies must make full use of their own resources prior to requesting this assistance.
- The non-federal jurisdiction must furnish lands, easements and rights of way, make necessary relocations, and hold the U.S. free from damages through the completion of a Cooperative Agreement.
- The water distribution system may be publicly or privately owned.

Limits and constraints

- Water is provided only for human consumption, not for livestock.
- The permanent restoration of any water supply is a local responsibility.
- Purchase and storage costs for water are not eligible for this assistance.



- Emergency Water Assistance will be the minimum needed consistent with health and welfare requirements of the affected population.

- Quantity and means of distribution determined by the Corps' Walla Walla District, through a rapid evaluation and analysis, considering the situation, community needs and cost effectiveness of available options.

- If community has multiple sources of water, this assistance will provide only the amount that the remaining sources, with conservation, cannot provide.

- Loss of water is not a basis for assistance, only if it is affected by drought or contamination.

- Water is not furnished for commercial purposes. However, drinking water can be provided for employees, and on-site customers.

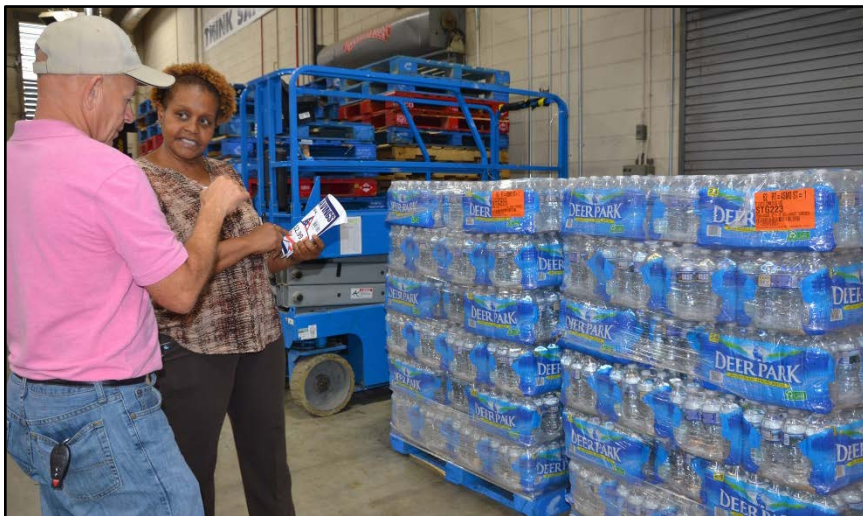


Requesting Emergency Water Assistance

- Requests for assistance must be initiated by the Governor or his/her authorized representative, or the Tribal Chairman, to the Commander of Walla Walla District through the Readiness Office.

- This applies to those parts of Washington, Oregon, Idaho and Wyoming within the Walla Walla District boundaries (see attached map).

- The impacted area must have been declared a "drought distressed area" by the Governor or Tribal Chairman, and Assistant Secretary of the Army for Civil Works.



- The request must:
 - Address commitments, capabilities and efforts undertaken to date.
 - Identify the specific needs and the required Corps assistance.
 - Identify additional State/Tribal/Local commitments.
 - Identify the projects sponsors, who must be capable of executing a Cooperative Agreement with the Corps.

- Assistance is subject to approval by Headquarters, U.S. Army Corps of Engineers, and requires the completion of a Project Information Report (PIR) by the Corps' Walla Walla District.

How to reach us

Contact Walla Walla District for Emergency Water Assistance. Business hours are 7:30 a.m. to 4 p.m., Monday through Friday – call 509-527-7146 or email cenww-eoc@usace.army.mil. After business hours, contact the Duty Officer at 1-509-380-4538 (to assure contact, dial all 11 digits, even within the 509 area code).

When contacting us during an emergency, please be ready to discuss your current situation, your response operations and what support you need. Our staff is also available to answer questions prior to floods.

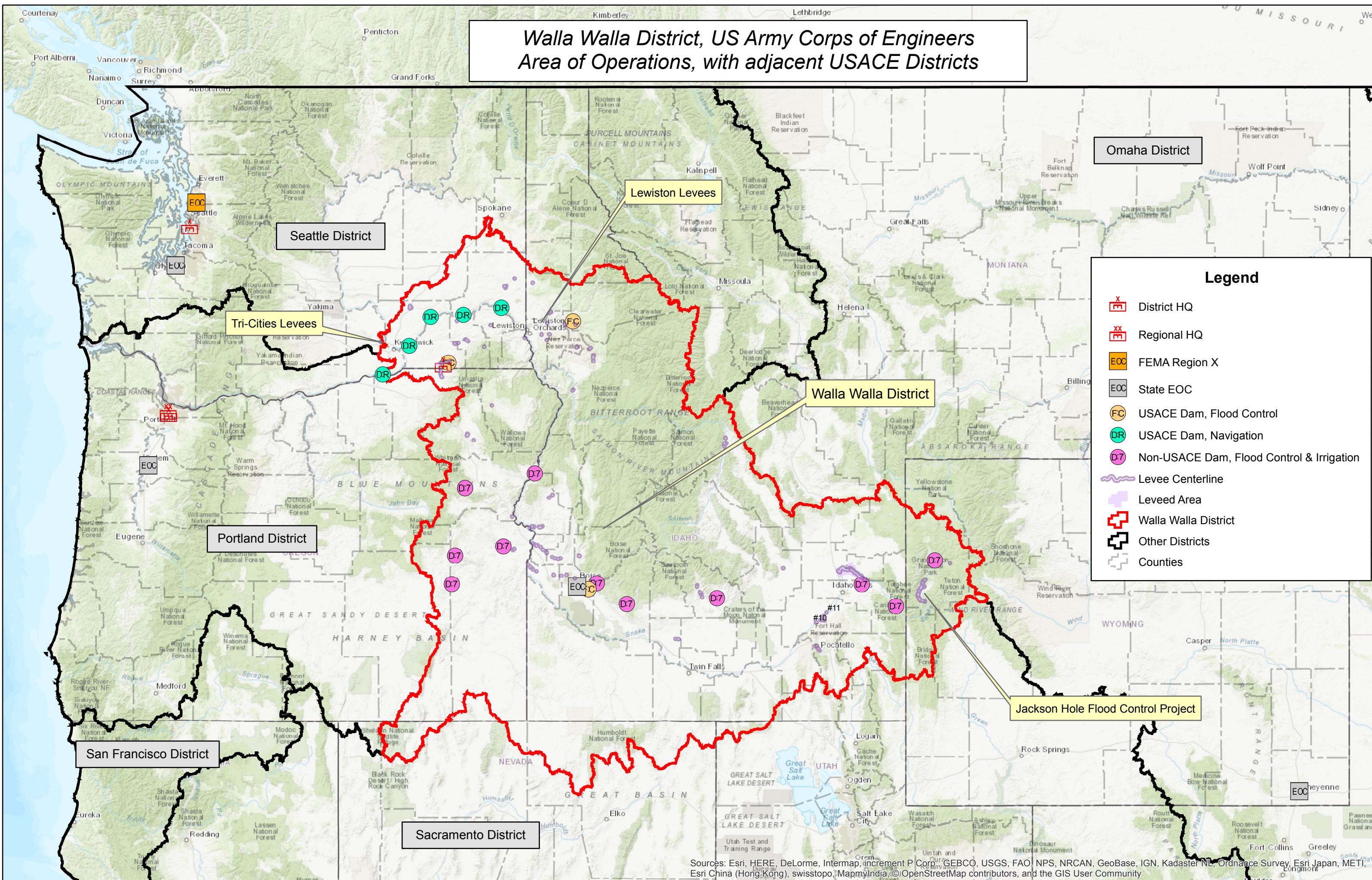
U.S. ARMY CORPS OF ENGINEERS – WALLA WALLA DISTRICT

201 North 3rd Avenue; Walla Walla, WA 99362

www.nww.usace.army.mil

November 2017

Walla Walla District, US Army Corps of Engineers Area of Operations, with adjacent USACE Districts



Omaha District

Seattle District

Tri-Cities Levees

Lewiston Levees

Walla Walla District

Portland District

Jackson Hole Flood Control Project

San Francisco District

Sacramento District

Legend

- District HQ
- Regional HQ
- FEMA Region X
- State EOC
- USACE Dam, Flood Control
- USACE Dam, Navigation
- Non-USACE Dam, Flood Control & Irrigation
- Levee Centerline
- Leveed Area
- Walla Walla District
- Other Districts
- Counties

Sources: Esri, HERE, DeLorme, Intermap, increment P Corp., GEBCO, USGS, FAO, NPS, NRCAN, GeoBase, IGN, Kadaster NL, Ordnance Survey, Esri Japan, METI, Esri China (Hong Kong), swisstopo, MapmyIndia, © OpenStreetMap contributors, and the GIS User Community